

GPL 10000

High-Volume Odorant Injection

Patented

Accurate odorization from 480 MSCFD to 240 MMSCFD

ABOUT GPL ODORIZERS

GPL Odorizers meets the need for simpler, cost-effective, planet-friendly odorization by employing advanced technology to deliver safe, accurate, and reliable odorant injection systems for natural gas, biogas, and propane.

FEATURES

- No odor escape during operation
- High rangeability (100:1 turndown)
- Few moving parts
- Dual stroke electric bellows pump
- Wireless modem
- Interfaces with SCADA Systems
- Remote communication (using Modbus or wireless modem)
- ⇒ Real-time mobile alerts
- ⇒ Online monitoring
- Industry-leading PLC
- ⇒ Intuitive 7" color touchscreen
- ⇒ SD card data storage
- CI I Div 2, Groups C and D

BENEFITS

- Environmentally friendly—no gas actuates the system—clean, sealed, and ventless
- ⇒ Lowers false leak-call complaints
- ⇒ Saves pipeline gas
- Saves time and money with remote monitoring, real-time communications, and efficient reporting
- ⇒ No additional software required
- ⇒ Mobile alerts to smartphone and PC
- Simple, cost-effective, competitively priced, easy to maintain and operate
- ⇒ Low maintenance and long-lasting performance
- Accurate over a wide range of gas flows and pressures.

GPL
ODORIZERS
planet-friendly solutions

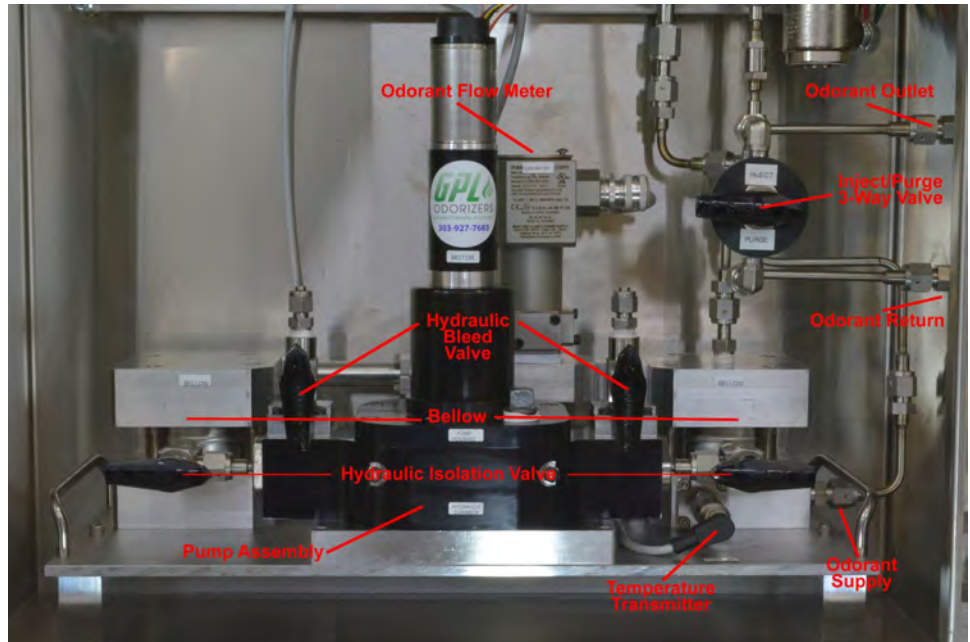
MASTER DISTRIBUTOR:

Linc Energy Systems

www.LincEnergySystems.com

info@LincEnergySystems.com

(303) 697-6701



Solid -state modular design permits hot-swap capability, minimal joints, and tubing for long lasting performance.

DESCRIPTION

The GPL 10000 is intended for high-pressure and high-volume applications at transmission companies and large city gate stations. The odorizer has high rangeability, achieving precision odorization over a wide operating range of volume. The industry-leading programmable logic controller (PLC) interfaces with the flow meter and its system components to maintain continuous odorant injection proportional to the gas flow rate.

Advanced technology, cost-effective, and planet friendly ...

OPTIONS

- Turnkey odorization packages
- Thermoelectric generator
- Odorant pressure control

It just makes scents!"



12450 W. Cedar Dr. • Lakewood, CO 80033 T 303-927-7683

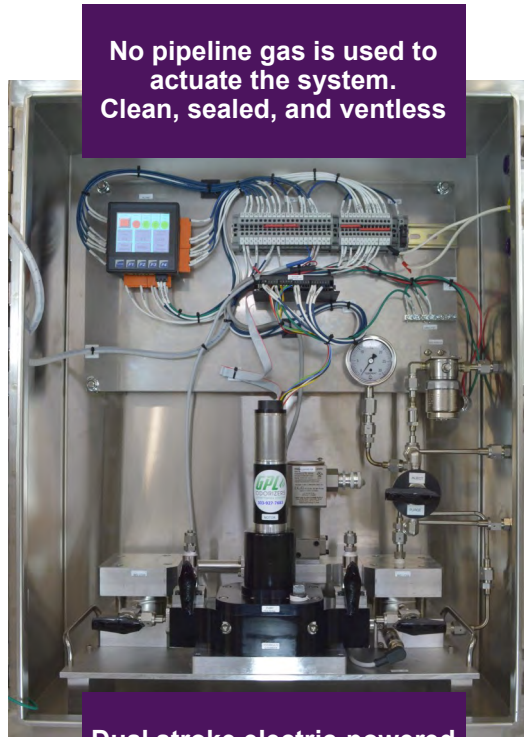
WWW.GASODORIZER.COM

Page 2

Odorant Injection System



Complete odorization packages available in horizontal and vertical orientations (shown).

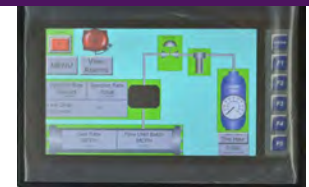


No pipeline gas is used to actuate the system. Clean, sealed, and ventless

Dual stroke electric-powered pump permits continuous odorant injection.



304 SS Enclosure (above) and PLC with 7" touchscreen (below)



PRODUCT SPECIFICATIONS SHEET

Weight

194 lb. (88 kg)

Power

Typical: 24 VDC; 0.036 HP; 27.05 W
 Maximum: 24 VDC; 0.193 HP; 124.8 W
 Optional: AC

Gas Pipeline Pressure

Up to 1480 PSI (102 Bar)

Odorant Blanket Pressure

20 PSI (1 to 2 Bar)

Data Logging

Hourly archives with audit trail;
 FTP data retrieval; internal micro SD storage

Enclosure

304 stainless steel

Hazardous Area Classification

Cl I Div 2, Groups C and D

Overall Dimensions

32 1/2" (H) x 25 5/8" (W) x 10 7/8" (D);
 82.55 cm x 65.09 cm x 27.62 cm

Odorant Injection Rate, Continuous

From 2.4 MMSCFD to 240 MMSCFD
 (at an injection rate of 0.5 lb./MMSCFH)

Odorant Injection Rate, Batch

From 480 MSCFD to 2.4 MMSCFD
 (at an injection rate of 0.5 lb./MMSCFH)

Connections

Myers hub: (2) 3/4 in NPT; (1) 1/2 in NPT
 Odorant outlet, odorant return, odorant inlet:
 1/4 in comp

Operating Temperature Range

0 to 140°F (-18 to 60°C)
 Optional: Heater assembly available for
 below 0°F (-18°C)

User Interface Options:

- ⇒ 320x240 LCD Color Graphics Display with Touch Screen
- ⇒ IP Remote Communication

For more information contact:

2/2018



The end user is responsible for analyzing, testing, and selecting products and materials that are suitable for their specific applications. The end user must ensure that the product is installed correctly, safely applied, suitably maintained, and its use is limited to the intended purpose. Improper selection, installation, or use may result in personal injury or property damage.